

Active Ran

Catalog Number: 26915

Gene Symbol: RAN

Description: Anti-Active Ran Mouse Monoclonal Antibody

Background: Ran (Ras-related nuclear protein) is a member of the Ras-superfamily GTPases. Ran is involved in the transport of proteins across the nuclear envelope, as well as in microtubule organization during mitosis.

Immunogen: Recombinant full length protein of active Ran.

Tested applications: IP, IHC

Recommended dilutions:

1 µg for 1~2 mg total cellular proteins for IP;

1:100 dilution for IHC

Concentration: 1 mg/ml

Host: mouse

Clonality: Monoclonal

Isotype: IgG

Purity: Purified from ascites

Format: Liquid

Storage buffer:

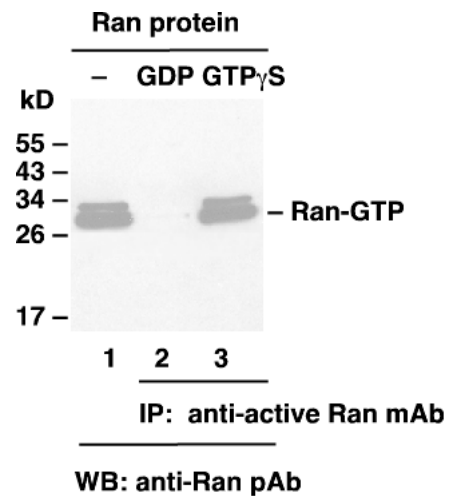
Preservative: no

Constituents: PBS (without Mg²⁺ and Ca²⁺), pH 7.4, 150 mM NaCl, 50% glycerol

Species Reactivity: Anti-active Ran antibody recognizes active Ran of vertebrates.

Storage Conditions: Store at -20°C. Avoid freeze / thaw cycles

Immunoprecipitation/Western blot



Ran activation assay. Purified Ran proteins were loaded as a control (lanes 1) or immunoprecipitated after treated with GDP (lane 2) or GTP γ S (lane 3). Immunoprecipitation was done with the anti-active Ran monoclonal antibody (Cat. No. 26915). Immunoblot was with an anti-Ran polyclonal antibody.

For research use only. Not for diagnostic or therapeutic applications.

24 Whitewoods Lane, Malvern, PA 19355

E-mail: sale@neweastbio.com

Tel: (610) 945-2007 FAX: (610) 945-2008

Web: www.neweastbio.com